

TOPS

BOTTOMS

SHIRT LOGOS

K-8 USES GTACS LOGO ONLY
9-12 CHOICE OF SF OR GTACS LOGO



PANTS LOGOS

ALL GRADE LEVELS
Lands' End pants will have embroidered SF or dove

DENNIS



SHIRT COLORS

POLOS

K-5 WHITE
6-8 WHITE OR NAVY
9-12 WHITE, YELLOW, NAVY

OXFORD

WHITE
WHITE, LT BLUE
WHITE, LT BLUE, NAVY STRIPE

PANT/SHORTS COLORS

PANTS

K-5 NAVY
6-8 KHAKI

SHORTS

NAVY
KHAKI

*SHORTS MAY BE WORN
MAY 1-OCTOBER 15

BOYS AND GIRLS

GIRLS ONLY



POLO SHIRT

AVAILABLE IN PIQUE OR
JERSEY FABRIC;
JERSEY FABRIC AVAILABLE IN
UNISEX FIT OR GIRLS FIT
WHITE (K-12)
NAVY (6-12)
YELLOW (9-12)

OXFORD SHIRTS

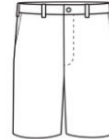
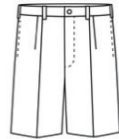
WHITE (K-12)
LIGHT BLUE (6-12)
NAVY PINSTRIPE (9-12)

PETER PAN COLLAR BLOUSES

(Worn Under Shift)
WHITE (K-5)

BOYS AND GIRLS

GIRLS ONLY



**IRVINGTON
FLAT FRONT
TWILL PANTS/
SHORTS***
NAVY (K-12)
KHAKI (6-12)

**PULL-ON
TWILL PANTS/
SHORTS***
NAVY (K-8)
KHAKI (6-8)

**FLAT FRONT
PERFORMANCE
FABRIC PANTS/
SHORT**
KHAKI (9-12)

**FLAT FRONT
STRETCH PANT/SHORT***
NAVY (K-12)
KHAKI (6-12)

SKIRTS/SKORTS/DRESSES



SKORT W/ TABS

TYLER PLAID
(K-12)
NAVY (K-12)

PLEATED SKORT

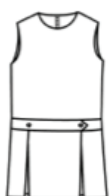
TYLER PLAID
(6-12)
NAVY (9-12)

CENTER BOX PLEAT SKIRT

TYLER PLAID
(6-12)

HIP STITCH SKIRT

TYLER PLAID
(6-12)



**JERSEY
POLO DRESS**
K-5
NAVY

SHIFT DRESS
K-5
TYLER PLAID

To ensure that
skirts meet
modesty standards,
some styles
available in +2" lengths.

Bike shorts
accessory
recommended
for skirts.

ORDERING INFORMATION

DENNIS UNIFORM

www.dennisuniform.com
SCHOOL CODE: HGT

Anna Marie, Store Manager
amb@dennisuniform.com
(248) 340-8890

**1532 N. Opdyke Rd. #450,
Auburn Hills, MI 48326**

Monday: 11:00 AM – 6:00 PM
Tuesday: 11:00 AM – 6:00 PM
Wednesday: 11:00 AM – 6:00 PM
Thursday: Closed
Friday: Closed
Saturday: 10:00 AM – 2:00 PM

LANDS' END

www.landsend.com>school
SCHOOL CODE: 900028200

A select few items are available
via the Lands' End school uniform
store. Enter our school code,
then your student's grade level,
and the available options will
appear. Pants ordered this way
will have the SF logo or a dove
embroidered on them for proper
identification.