

GIRLS UNIFORM PICTORIAL GUIDE

LOGO ON SHIRTS/SWEATERS
K-8 USES GTACS LOGO ONLY
9-12 CHOICE OF SF OR GTACS LOGO



LOGO ON PANTS/SHORTS

DENNIS PANTS TAGS

DENNIS



K-12

K-12

LANDS' END PANTS†
EMBROIDERED DOVE OR SF



K-12



9-12

	POLOS	OXFORD
SHIRT	K-5 WHITE	WHITE
COLORS	6-8 WHITE OR NAVY	WHITE, LT BLUE
	9-12 WHITE, YELLOW, BLUE	WHITE, LT BLUE, NAVY STRIPE

www.dennisuniform.com | 800.854.6951
WHEN ORDERING, BE SURE TO USE OUR SCHOOL CODE: **HGT**
1532 N. Opdyke Rd. #450, Auburn Hills, MI 48326



PETER PAN COLLAR BLOUSES
(Worn Under Shift Dress)
WHITE (K-5)

OXFORD SHIRTS
WHITE (K-12)
LIGHT BLUE (6-12)
NAVY PINSTRIPE (9-12)

JERSEY POLO SHIRTS
GIRLS or UNISEX
WHITE (K-12)
NAVY (6-12)
YELLOW (9-12)

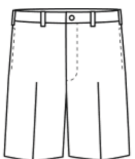
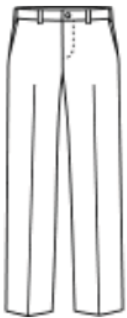
PIQUE POLO SHIRTS
WHITE (K-12)
NAVY (6-12)
YELLOW (9-12)



JERSEY POLO DRESS
K-5
NAVY



SHIFT DRESS
K-5
TYLER PLAID
Bike shorts recommended.



(SHORTS IN THE ABOVE STYLE AVAILABLE BUT NOT SHOWN)



IRVINGTON FLAT FRONT TWILL PANT/SHORT*
NAVY (K-12)
KHAKE (6-12)

PULL-ON TWILL PANT/SHORT*
NAVY (K-8)
KHAKE (6-8)

FLAT FRONT STRETCH PANT/SHORT*
NAVY (K-12)
KHAKE (6-12)

*SHORTS MAY BE WORN MAY 1 TO OCTOBER 15



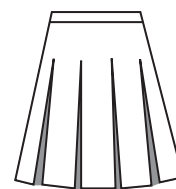
SKORT W/TABS
TYLER PLAID (K-12)
NAVY (K-12)



PLEATED SKORT
TYLER PLAID (6-12)
NAVY (9-12)



CENTER BOX PLEAT SKIRT
TYLER PLAID (6-12)



HIP STITCH SKIRT
TYLER PLAID (6-12)

To ensure that skirts meet modesty standards, some styles available in +2" lengths.
Bike shorts accessory recommended for skirts.

† **EXCEPTIONS/CARRYOVERS**

Select Lands' End cotton uniform chinos will be allowed until at least June 2021.

Lands' End pants are required to have an embroidered logo.

Approved Lands' End skirts, skorts, jumpers, or dresses labeled "at or below the knee" may be worn through their useful life, until June 2021.

High school students may wear Lands' End shirts (w/ logo and in approved colors only) until June 2021.