

BOYS UNIFORM PICTORIAL GUIDE

LOGO ON SHIRTS/SWEATERS
K-8 USES GTACS LOGO ONLY
9-12 CHOICE OF SF OR GTACS LOGO



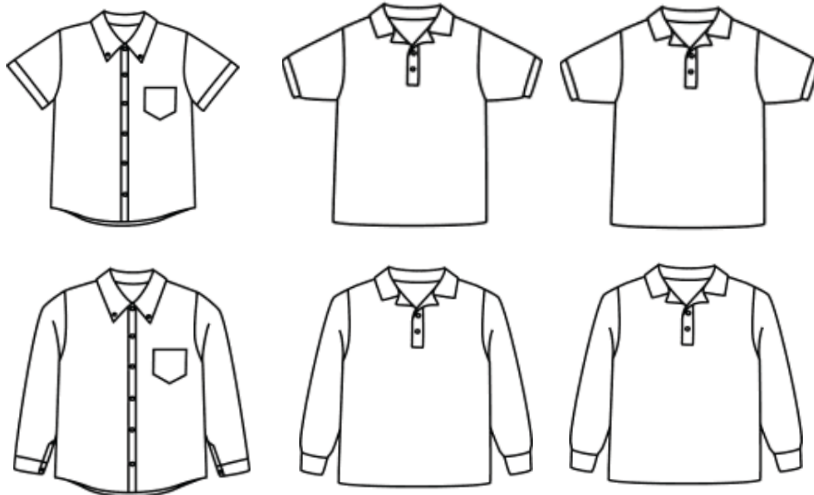
LOGO ON PANTS/SHORTS

DENNIS PANTS TAGS
DENNIS 
K-12 K-12

LANDS' END PANTS *
EMBROIDERED DOVE OR SF
 
K-12 9-12

SHIRT COLORS	POLOS	OXFORD
	K-5 WHITE	WHITE
	6-8 WHITE OR NAVY	WHITE, LT BLUE
	9-12 WHITE, YELLOW, NAVY	WHITE, LT BLUE, NAVY STRIPE

www.dennisuniform.com | 800.854.6951
WHEN ORDERING, BE SURE TO USE OUR SCHOOL CODE: **HGT**
1532 N. Opdyke Rd. #450, Auburn Hills, MI 48326



OXFORD SHIRTS
WHITE (K-12)
LIGHT BLUE (6-12)
NAVY PINSTRIPE (9-12)

JERSEY POLO SHIRTS
WHITE (K-12)
NAVY (6-12)
YELLOW (9-12)

PIQUE POLO SHIRTS
WHITE (K-12)
NAVY (6-12)
YELLOW (9-12)

*** EXCEPTIONS AND CARRYOVERS**

LANDS' END SCHOOL CODE: **900028200**

Select Lands' End cotton uniform chinos will be allowed until at least June 2021.

Lands' End pants are required to have an embroidered logo.

High school students with previously approved Lands' End shirts may wear them until June 2021.

DENNIS UNIFORM CUSTOMER SERVICE

Carrie Carnacchi
Regional Account Manager
DENNIS Uniform

E: cjc@dennisuniform.com
O: 248.340.8890 x303
C: 248.904.8416
1532 N. Opdyke Rd. #450, Auburn Hills, MI 48326

www.dennisuniform.com | 800.854.6951



(SHORTS IN THE ABOVE STYLE AVAILABLE BUT NOT SHOWN)

IRVINGTON FLAT FRONT TWILL PANT/SHORTS*
NAVY (K-12)
KHAKI (6-12)

PULL-ON TWILL PANTS/SHORTS*
NAVY (K-8)
KHAKI (6-8)

HAWTHORN PLEATED FRONT TWILL PANT/SHORTS*
NAVY (K-12)
KHAKI (6-12)

*SHORTS MAY BE WORN MAY 1 TO OCTOBER 15