

GIRLS UNIFORM PICTORIAL GUIDE

LOGO ON SHIRTS/SWEATERS
K-8 USES GTACS LOGO ONLY
9-12 CHOICE OF SF OR GTACS LOGO



LOGO ON PANTS/SHORTS

DENNIS PANTS TAGS
DENNIS 
K-12 K-12

LANDS' END PANTS†
EMBROIDERED DOVE OR SF
 
K-12 9-12

	POLOS	OXFORD
SHIRT	K-5 WHITE	WHITE
COLORS	6-8 WHITE OR NAVY	WHITE, LT BLUE
	9-12 WHITE, YELLOW, BLUE	WHITE, LT BLUE, NAVY STRIPE

www.dennisuniform.com | 800.854.6951
WHEN ORDERING, BE SURE TO USE OUR SCHOOL CODE: **HGT**
1532 N. Opdyke Rd. #450, Auburn Hills, MI 48326



PETER PAN COLLAR BLOUSES
(Worn Under Shift Dress)
WHITE (K-5)



OXFORD SHIRTS
WHITE (K-12)
LIGHT BLUE (6-12)
NAVY PINSTRIPE (9-12)



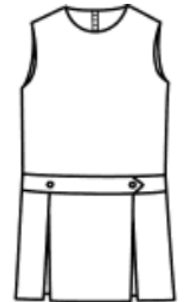
JERSEY POLO SHIRTS
GIRLS or UNISEX
WHITE (K-12)
NAVY (6-12)
YELLOW (9-12)



PIQUE POLO SHIRTS
WHITE (K-12)
NAVY (6-12)
YELLOW (9-12)



JERSEY POLO DRESS
K-5
NAVY



SHIFT DRESS
K-5
TYLER PLAID

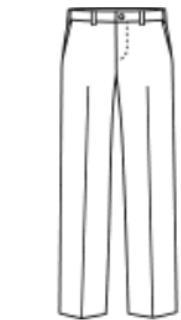
Bike shorts accessory may be worn for modesty.

† **EXCEPTIONS/CARRYOVERS**

SCHOOL CODE **900028200**
Select Lands' End cotton uniform chinos will be allowed at least until the next uniform review.

Lands' End pants are required to have an embroidered logo.

Approved Lands' End skirts, skorts, jumpers, or dresses labeled "at or below the knee" may be worn through their useful life, until June 2020. High school students with approved Lands' End shirts may wear them 'til June 2020.



IRVINGTON FLAT FRONT TWILL PANT/SHORT*
NAVY (K-12)
KHAKI (6-12)



ELASTIC PULL-ON TWILL
NAVY (K-8)
KHAKI (6-8)



FLAT FRONT STRETCH PANT/SHORT*
NAVY (K-12)
KHAKI (6-12)



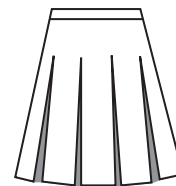
SKORT W/TABS
TYLER PLAID (K-8)
NAVY (K-8)



PLEATED SKORT
TYLER PLAID (6-12)
NAVY (9-12)



CENTER BOX PLEAT SKIRT
TYLER PLAID (6-12)



HIP STITCH SKIRT
TYLER PLAID (6-12)

To ensure that skirts meet modesty standards, some styles available in +2" lengths. Bike shorts accessory recommended for skirts.

*SHORTS MAY BE WORN MAY 1 TO OCTOBER 15