

# BOYS UNIFORM PICTORIAL GUIDE

**LOGO ON SHIRTS/SWEATERS**  
K-8 USES GTACS LOGO ONLY  
9-12 CHOICE OF SF OR GTACS LOGO



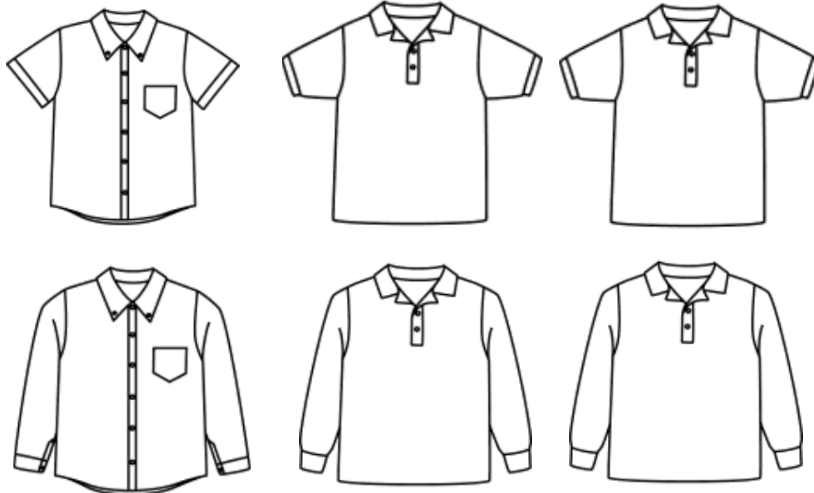
**LOGO ON PANTS/SHORTS**

DENNIS PANTS TAGS  
**DENNIS**   
K-12 K-12

LANDS' END PANTS \*  
EMBROIDERED DOVE OR SF  
   
K-12 9-12

SHIRT COLORS	POLOS	OXFORD
K-5	WHITE	WHITE
6-8	WHITE OR NAVY	WHITE, LT BLUE
9-12	WHITE, YELLOW, NAVY	WHITE, LT BLUE, NAVY STRIPE

[www.dennisuniform.com](http://www.dennisuniform.com) | 800.854.6951  
WHEN ORDERING, BE SURE TO USE OUR SCHOOL CODE: **HGT**  
**1532 N. Opdyke Rd. #450, Auburn Hills, MI 48326**



**OXFORD SHIRTS**  
WHITE (K-12)  
LIGHT BLUE (6-12)  
NAVY PINSTRIPE (9-12)

**JERSEY POLO SHIRTS**  
WHITE (K-12)  
NAVY (6-12)  
YELLOW (9-12)

**PIQUE POLO SHIRTS**  
WHITE (K-12)  
NAVY (6-12)  
YELLOW (9-12)

## \* EXCEPTIONS AND CARRYOVERS

LANDS' END SCHOOL CODE: **900028200**

Select Lands' End cotton uniform chinos will be allowed until June 2020.

Lands' End pants are required to have an embroidered logo.

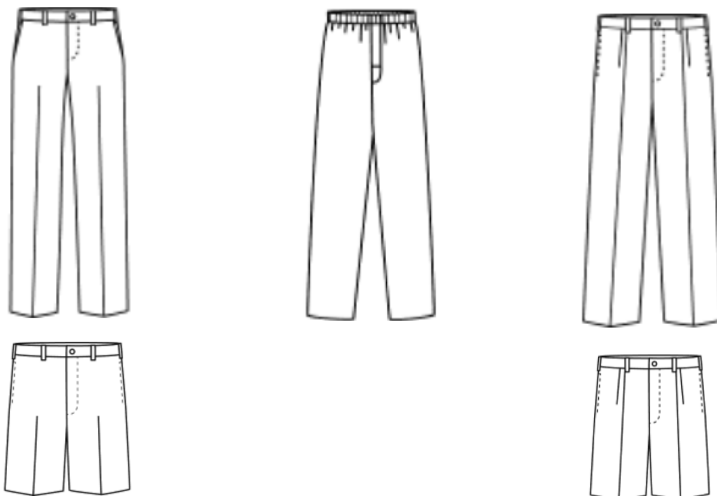
High school students with previously approved Lands' End shirts may wear them until June 2020.

## DENNIS UNIFORM CUSTOMER SERVICE

Carrie Carnacchi  
Regional Account Manager  
DENNIS Uniform

E: [cjc@dennisuniform.com](mailto:cjc@dennisuniform.com)  
O: 248.340.8890 x303  
C: 248.904.8416  
1532 N. Opdyke Rd. #450, Auburn Hills, MI 48326

[www.dennisuniform.com](http://www.dennisuniform.com) | 800.854.6951



**IRVINGTON FLAT FRONT TWILL PANT/SHORTS\***  
NAVY (K-12)  
KHAKI (6-12)

**ELASTIC PULL-ON TWILL**  
NAVY (K-8)  
KHAKI (6-8)

**HAWTHORN PLEATED FRONT TWILL PANT/SHORTS\***  
NAVY (K-12)  
KHAKI (6-12)

\*SHORTS MAY BE WORN MAY 1 TO OCTOBER 15