

# BOYS UNIFORM PICTORIAL GUIDE

**LOGO ON SHIRTS/SWEATERS**  
K-8 USES GTACS LOGO ONLY  
9-12 CHOICE OF SF OR GTACS LOGO



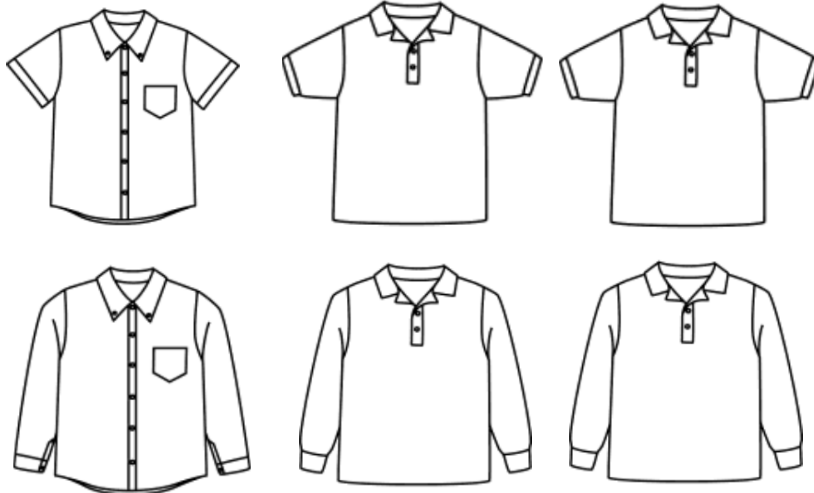
**LOGO ON PANTS/SHORTS**

DENNIS PANTS TAGS  
DENNIS   
K-12 K-12

LANDS' END PANTS \*  
EMBROIDERED DOVE OR SF  
   
K-12 9-12

SHIRT COLORS	POLOS	OXFORD
K-5 WHITE	WHITE	WHITE
6-8 WHITE OR BLUE	WHITE, LT BLUE	WHITE, LT BLUE
9-12 WHITE, YELLOW, BLUE	WHITE, LT BLUE, NAVY STRIPE	WHITE, LT BLUE, NAVY STRIPE

[www.dennisuniform.com](http://www.dennisuniform.com) | 800.854.6951  
WHEN ORDERING, BE SURE TO USE OUR SCHOOL CODE: HGT  
1532 N. Opdyke Rd. #450, Auburn Hills, MI 48326



**OXFORD SHIRTS**  
WHITE (K-12)  
LIGHT BLUE (6-12)  
NAVY PINSTRIPE (9-12)

**JERSEY POLO SHIRTS**  
WHITE (K-12)  
NAVY (6-12)  
YELLOW (9-12)

**PIQUE POLO SHIRTS**  
WHITE (K-12)  
NAVY (6-12)  
YELLOW (9-12)

**\* EXCEPTIONS AND CARRYOVERS**

LANDS' END SCHOOL CODE: 900028200

Select Lands' End cotton uniform chinos will be allowed at least until the next uniform review.

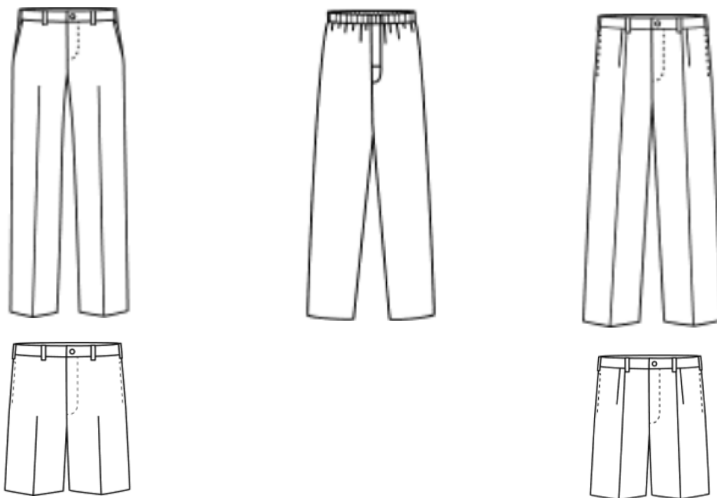
Lands' End pants are required to have an embroidered logo.

**DENNIS UNIFORM CUSTOMER SERVICE**

Carrie Carnacchi  
Regional Account Manager  
DENNIS Uniform

E: [cjc@dennisuniform.com](mailto:cjc@dennisuniform.com)  
O: 248.340.8890 x303  
C: 248.904.8416  
1532 N. Opdyke Rd. #450, Auburn Hills, MI 48326

[www.dennisuniform.com](http://www.dennisuniform.com) | 800.854.6951



**IRVINGTON FLAT FRONT TWILL PANT/SHORTS\***  
NAVY (K-12)  
KHAKE (6-12)

**ELASTIC PULL-ON TWILL**  
NAVY (K-8)  
KHAKE (6-8)

**HAWTHORN PLEATED FRONT TWILL PANT/SHORTS\***  
NAVY (K-12)  
KHAKE (6-12)

\*SHORTS MAY BE WORN MAY 1 TO OCTOBER 15